



LABOUR FORCE

QUEENSLAND

EMBARGO: 11:30AM (CANBERRA TIME) WED 15 JULY 1998

CONTENTS

	<i>page</i>
Summary of findings	3

TABLES

Labour force status aged 15 and over, Queensland

1-3 Original, seasonally adjusted and trend series	5-7
4-6 Statistical regions	9-11
7 Age by major statistical region	12
8 Persons 15 to 19 years, by attendance at an educational institution	13
9 Persons 20 to 24 years, by attendance at a tertiary institution	13

Employed persons, Queensland

10 Full-time or part-time status	14
11 Average hours worked by status in employment, industry division and occupation group	15
12 Status in employment, industry division and occupation group	16
13 Industry division by occupation group	16

Unemployed persons, Queensland

14-16 Duration of unemployment	17-19
17 Unemployed persons and unemployment rates	20

ADDITIONAL INFORMATION

Special surveys data relating to the labour force	21
Releases of interest	22
Maps showing statistical regions of Queensland	23
Explanatory notes	24
Technical notes	29
Glossary	34

- For information about these and related statistics, contact Information Inquiries on (07) 3222 6351 or refer to the back cover of this publication.

NOTES

FORTHCOMING ISSUES

ISSUE

RELEASE DATE

August 1998

15 October 1998

November 1998

15 January 1999

February 1998

15 April 1999



INQUIRIES

For information about other ABS statistics and services, please refer to the back of this publication.

BRIAN DOYLE

Regional Director, Queensland

SUMMARY OF FINDINGS

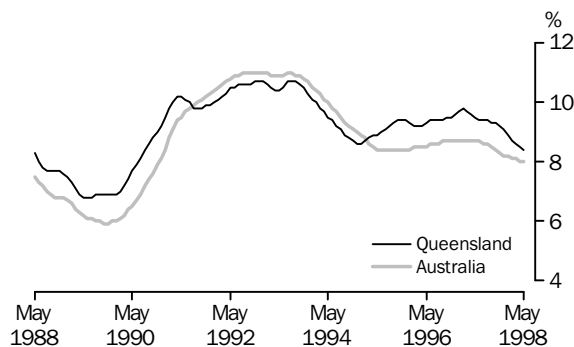
TREND SERIES

In Queensland, employment increased, in trend terms, by 63,400 to 1,616,200 between May 1997 and May 1998 while the number of unemployed persons decreased by 16,000 to 147,400 over the same period. The unemployment rate decreased from 9.5% in May 1997 to 8.4% in May 1998. The participation rate increased from 64.3% in May 1997 to 64.8% in May 1998. In Australia, in trend terms, employment increased by 164,300 from May 1997 to May 1998 while the number of unemployed persons decreased by 54,000 over the same period.

LABOUR FORCE, QUEENSLAND, TREND SERIES

Particulars	Unit	May 1997	February 1998	March 1998	April 1998	May 1998	Annual change
Employed	'000	1 552.8	1 604.7	1 609.1	1 612.8	1 616.2	4.1 %
Unemployed	'000	163.4	153.7	151.3	149.2	147.4	-9.8 %
Labour force	'000	1 716.2	1 758.4	1 760.4	1 762.0	1 763.6	2.8 %
Unemployment rate	%	9.5	8.7	8.6	8.5	8.4	-1.1 pts

UNEMPLOYMENT RATE, TREND SERIES



SEASONALLY ADJUSTED SERIES

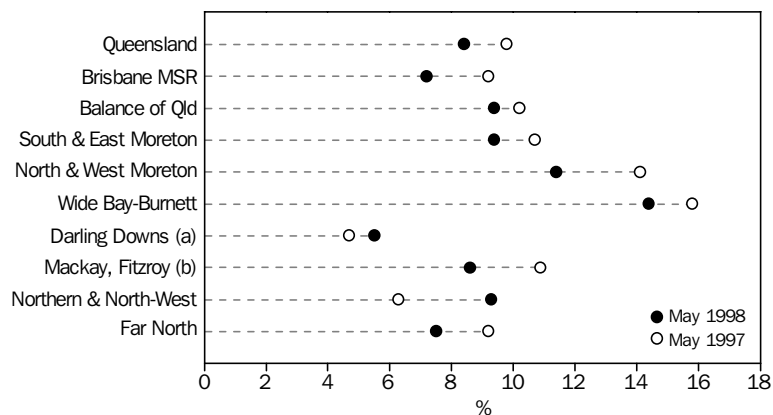
In seasonally adjusted terms, employment in Queensland increased by 66,200 to 1,616,100 between May 1997 and May 1998 while the number of unemployed persons decreased by 19,500 to 147,600 over the same period. The unemployment rate decreased from 9.7% in May 1997 to 8.4% in May 1998.

REGIONAL ESTIMATES (ORIGINAL SERIES)

The unemployment rate for the Brisbane Major Statistical Region (MSR) in May 1998 was 7.2% and for the Balance of Queensland was 9.4%. South and East Brisbane Statistical Division (BSD) Balance had the highest unemployment rate (8.6%) in the Brisbane MSR while the Brisbane City Inner Ring had the lowest rate (5.2%). For the Balance of Queensland, the region with the highest unemployment rate was Wide Bay-Burnett (14.4%) followed by North and West Moreton (11.4%). The Darling Downs and South-West Statistical Region had the lowest unemployment rate at 5.5%.

SUMMARY OF FINDINGS *continued*

UNEMPLOYMENT RATE: QUEENSLAND REGIONS



(a) Including South-West. (b) Including Central-West.

YOUTH ESTIMATES

The number of unemployed 15 to 19 year olds in the Queensland labour force decreased 14.5% to 26,000 persons over the year from May 1997 to May 1998, while the number employed increased by 16,000 or 14.5% to 126,700 persons. The unemployment rate for this group declined from 21.5% in May 1997 to 17.0% in May 1998. There were 183,600 employed 20 to 24 year olds in May 1998, a marginal increase over the previous 12 months. The unemployment rate for this group decreased from 15.8% to 14.4% over the same period.

INDUSTRY ESTIMATES

In May 1998, the retail trade industry in Queensland employed the most persons with 243,800. This was a decrease of 0.5% on the figure for May 1997. Employment in the manufacturing industry decreased 5,600 (3.1%) to 174,900.

EMPLOYMENT AND UNEMPLOYMENT FOR SELECTED GROUPS

Particulars	EMPLOYED PERSONS.....			UNEMPLOYED PERSONS.....		
	May 1997 '000	May 1998 '000	Annual change %	May 1997 '000	May 1998 '000	Annual change %
Males	874.6	903.2	3.3	95.6	87.1	-8.9
Females	669.1	706.2	5.5	71.3	60.2	-15.6
Persons aged (years)						
15-19	110.7	126.7	14.5	30.4	26.0	-14.5
20-24	183.4	183.6	0.1	34.4	30.8	-10.5
25-44	770.1	807.5	4.9	74.8	61.3	-18.0
45 and over	479.5	491.7	2.5	27.3	29.2	7.0
Industry of current employment, or of last full-time job if unemployed						
Manufacturing	180.5	174.9	-3.1	14.4	14.2	-1.4
Construction	122.6	129.7	5.8	12.7	7.6	-40.2
Wholesale trade	79.9	100.6	25.9	5.6	4.5	-19.6
Retail trade	245.1	243.8	-0.5	11.4	11.3	-0.9
Property and business services	139.8	157.3	12.5	6.8	6.7	-1.5
Health and community services	145.1	155.9	7.4	4.0	3.7	-7.5
Other industries	630.4	647.2	2.7	37.1	27.6	-25.6
Other unemployed persons	75.0	71.8	-4.3
Queensland	1 543.7	1 609.4	4.3	166.9	147.3	-11.7

TABLE 1 — LABOUR FORCE STATUS: ORIGINAL SERIES, QUEENSLAND

Month	Employed		Unemployed		Labour force	Not in labour force	Civilian population aged 15 years and over	Unemployment rate	Participation rate
	Full-time	Total	Looking for full-time work	Total					
	'000	'000	'000	'000					
MALES									
1997 —									
March	756.6	865.6	95.2	110.4	976.1	341.4	1,317.4	11.3	74.1
April	762.4	871.4	87.4	100.6	972.0	347.7	1,319.7	10.3	73.7
May	767.6	874.6	84.1	95.6	970.1	351.8	1,321.9	9.9	73.4
June	768.4	888.0	75.9	86.3	974.3	349.9	1,324.1	8.9	73.6
July	790.7	894.4	79.1	88.8	983.2	343.0	1,326.2	9.0	74.1
August	772.4	882.9	85.0	93.7	976.6	351.6	1,328.2	9.6	73.5
September	781.3	894.3	77.8	90.1	984.3	346.0	1,330.3	9.1	74.0
October	787.1	905.0	74.5	88.0	993.0	339.8	1,332.8	8.9	74.5
November	781.5	893.8	79.2	91.4	985.2	350.2	1,335.4	9.3	73.8
December	795.7	910.6	79.4	92.5	1,003.1	334.9	1,338.0	9.2	75.0
1998 —									
January	792.6	901.2	87.8	99.2	1,000.4	339.7	1,340.1	9.9	74.6
February	792.1	905.2	87.2	101.4	1,006.6	335.7	1,342.3	10.1	75.0
March	789.0	905.5	79.2	92.4	997.9	346.6	1,344.4	9.3	74.2
April	793.1	903.0	76.3	88.6	991.6	355.0	1,346.6	8.9	73.6
May	783.1	903.2	76.0	87.1	990.3	358.6	1,348.8	8.8	73.4
FEMALES									
1997 —									
March	374.4	670.0	49.0	71.3	741.3	600.5	1,341.9	9.6	55.2
April	369.8	671.2	49.4	67.4	738.5	605.6	1,344.1	9.1	54.9
May	373.2	669.1	47.9	71.3	740.4	605.9	1,346.4	9.6	55.0
June	368.5	680.8	42.4	63.3	744.0	604.6	1,348.6	8.5	55.2
July	382.0	682.6	44.4	61.2	743.8	607.0	1,350.8	8.2	55.1
August	379.9	672.1	46.4	67.1	739.2	613.7	1,352.9	9.1	54.6
September	382.9	695.1	42.7	67.4	762.5	592.6	1,355.1	8.8	56.3
October	382.5	694.6	41.2	62.6	757.3	600.3	1,357.6	8.3	55.8
November	386.2	697.1	43.0	64.4	761.5	598.6	1,360.1	8.5	56.0
December	404.5	696.6	45.6	63.8	760.4	602.3	1,362.7	8.4	55.8
1998 —									
January	386.6	670.5	46.6	66.0	736.5	628.2	1,364.7	9.0	54.0
February	390.6	698.2	53.7	75.0	773.2	593.5	1,366.7	9.7	56.6
March	382.3	696.2	43.8	65.1	761.3	607.4	1,368.7	8.6	55.6
April	390.7	704.8	42.1	64.9	769.7	601.2	1,370.8	8.4	56.1
May	387.9	706.2	41.0	60.2	766.4	606.5	1,373.0	7.9	55.8
PERSONS									
1997 —									
March	1,131.0	1,535.6	144.2	181.8	1,717.4	941.9	2,659.3	10.6	64.6
April	1,132.2	1,542.6	136.8	167.9	1,710.5	953.2	2,663.8	9.8	64.2
May	1,140.8	1,543.7	132.0	166.9	1,710.6	957.7	2,668.3	9.8	64.1
June	1,137.0	1,568.8	118.3	149.5	1,718.3	954.5	2,672.8	8.7	64.3
July	1,172.7	1,577.0	123.5	150.0	1,727.0	950.0	2,676.9	8.7	64.5
August	1,152.3	1,555.0	131.5	160.8	1,715.8	965.4	2,681.1	9.4	64.0
September	1,164.2	1,589.4	120.5	157.4	1,746.8	938.6	2,685.3	9.0	65.0
October	1,169.6	1,599.6	115.7	150.6	1,750.3	940.1	2,690.4	8.6	65.1
November	1,167.7	1,590.8	122.2	155.9	1,746.7	948.8	2,695.5	8.9	64.8
December	1,200.2	1,607.2	125.0	156.3	1,763.5	937.1	2,700.6	8.9	65.3
1998 —									
January	1,179.2	1,571.6	134.4	165.2	1,736.9	967.9	2,704.8	9.5	64.2
February	1,182.7	1,603.4	140.9	176.5	1,779.8	929.1	2,709.0	9.9	65.7
March	1,171.2	1,601.7	123.0	157.5	1,759.2	953.9	2,713.1	9.0	64.8
April	1,183.8	1,607.8	118.4	153.5	1,761.3	956.2	2,717.5	8.7	64.8
May	1,170.9	1,609.4	117.1	147.3	1,756.7	965.1	2,721.8	8.4	64.5

TABLE 2 — LABOUR FORCE STATUS: SEASONALLY ADJUSTED SERIES, QUEENSLAND

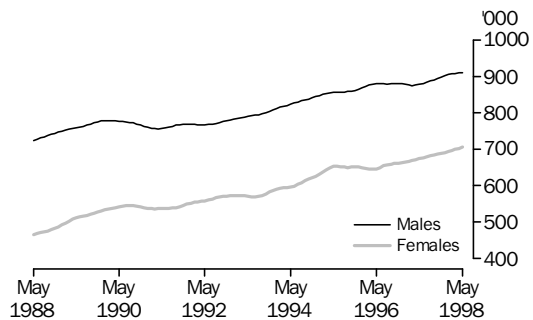
<i>Month</i>	<i>Employed</i> '000	<i>Unemployed</i> '000	<i>Labour force</i> '000	<i>Unemployment rate</i> %	<i>Participation rate</i> %
MALES					
<i>1997—</i>					
March	871.0	102.8	973.8	10.6	73.9
April	875.2	97.2	972.5	10.0	73.7
May	879.3	96.7	976.0	9.9	73.8
June	883.9	89.4	973.3	9.2	73.5
July	887.9	95.7	983.6	9.7	74.2
August	887.3	96.3	983.6	9.8	74.1
September	886.6	94.6	981.2	9.6	73.8
October	900.4	92.8	993.2	9.3	74.5
November	895.4	95.2	990.6	9.6	74.2
December	899.8	94.6	994.4	9.5	74.3
<i>1998—</i>					
January	910.8	89.2	1,000.0	8.9	74.6
February	909.1	93.2	1,002.3	9.3	74.7
March	911.3	85.9	997.3	8.6	74.2
April	906.7	85.8	992.5	8.6	73.7
May	908.0	88.3	996.3	8.9	73.9
FEMALES					
<i>1997—</i>					
March	669.4	66.0	735.4	9.0	54.8
April	671.9	66.5	738.5	9.0	54.9
May	670.6	70.4	741.1	9.5	55.0
June	678.6	65.2	743.7	8.8	55.1
July	681.7	64.5	746.2	8.6	55.2
August	679.5	69.7	749.2	9.3	55.4
September	683.8	68.4	752.2	9.1	55.5
October	691.7	68.4	760.1	9.0	56.0
November	690.3	67.5	757.8	8.9	55.7
December	688.0	64.4	752.3	8.6	55.2
<i>1998—</i>					
January	690.5	64.9	755.4	8.6	55.4
February	702.0	65.2	767.2	8.5	56.1
March	695.5	60.4	756.0	8.0	55.2
April	705.8	64.1	769.9	8.3	56.2
May	708.1	59.3	767.4	7.7	55.9
PERSONS					
<i>1997—</i>					
March	1,540.3	168.8	1,709.2	9.9	64.3
April	1,547.2	163.8	1,711.0	9.6	64.2
May	1,549.9	167.1	1,717.1	9.7	64.4
June	1,562.4	154.6	1,717.0	9.0	64.2
July	1,569.6	160.2	1,729.8	9.3	64.6
August	1,566.8	166.0	1,732.8	9.6	64.6
September	1,570.4	163.0	1,733.4	9.4	64.6
October	1,592.1	161.2	1,753.2	9.2	65.2
November	1,585.6	162.8	1,748.4	9.3	64.9
December	1,587.8	159.0	1,746.8	9.1	64.7
<i>1998—</i>					
January	1,601.3	154.2	1,755.4	8.8	64.9
February	1,611.1	158.3	1,769.5	8.9	65.3
March	1,606.9	146.4	1,753.2	8.3	64.6
April	1,612.5	149.9	1,762.4	8.5	64.9
May	1,616.1	147.6	1,763.6	8.4	64.8

TABLE 3 — LABOUR FORCE STATUS: TREND SERIES, QUEENSLAND

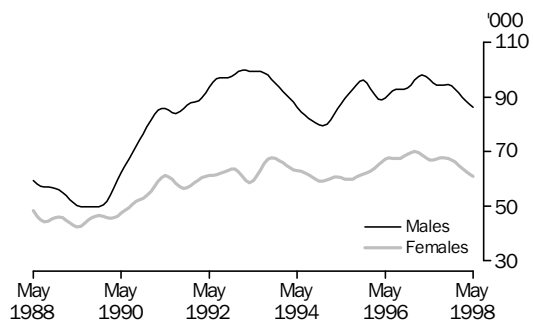
<i>Month</i>	<i>Employed</i> '000	<i>Unemployed</i> '000	<i>Labour force</i> '000	<i>Unemployment rate</i> %	<i>Participation rate</i> %
MALES					
<i>1997—</i>					
March	875.7	98.0	973.7	10.1	73.9
April	876.3	97.6	973.9	10.0	73.8
May	878.5	96.4	975.0	9.9	73.8
June	881.8	95.1	977.0	9.7	73.8
July	885.2	94.5	979.6	9.6	73.9
August	888.3	94.3	982.6	9.6	74.0
September	891.4	94.5	985.9	9.6	74.1
October	894.9	94.6	989.4	9.6	74.2
November	898.8	94.1	992.9	9.5	74.4
December	902.7	92.9	995.6	9.3	74.4
<i>1998—</i>					
January	905.8	91.5	997.3	9.2	74.4
February	907.9	90.0	997.9	9.0	74.3
March	909.1	88.6	997.7	8.9	74.2
April	909.7	87.4	997.1	8.8	74.0
May	910.2	86.4	996.6	8.7	73.9
FEMALES					
<i>1997—</i>					
March	670.0	68.7	738.7	9.3	55.1
April	672.2	67.7	739.9	9.1	55.0
May	674.3	67.0	741.3	9.0	55.1
June	676.7	66.9	743.5	9.0	55.1
July	679.5	67.3	746.8	9.0	55.3
August	682.3	67.7	750.0	9.0	55.4
September	685.0	67.8	752.9	9.0	55.6
October	687.2	67.6	754.8	9.0	55.6
November	689.1	67.0	756.2	8.9	55.6
December	691.3	66.1	757.3	8.7	55.6
<i>1998—</i>					
January	693.8	64.8	758.7	8.5	55.6
February	696.8	63.7	760.5	8.4	55.6
March	700.0	62.7	762.7	8.2	55.7
April	703.1	61.8	764.9	8.1	55.8
May	706.1	61.0	767.1	8.0	55.9
PERSONS					
<i>1997—</i>					
March	1,545.7	166.7	1,712.4	9.7	64.4
April	1,548.6	165.3	1,713.8	9.6	64.3
May	1,552.8	163.4	1,716.2	9.5	64.3
June	1,558.5	162.0	1,720.5	9.4	64.4
July	1,564.7	161.7	1,726.4	9.4	64.5
August	1,570.6	162.0	1,732.7	9.4	64.6
September	1,576.4	162.3	1,738.7	9.3	64.7
October	1,582.0	162.2	1,744.3	9.3	64.8
November	1,588.0	161.1	1,749.1	9.2	64.9
December	1,593.9	159.0	1,752.9	9.1	64.9
<i>1998—</i>					
January	1,599.7	156.3	1,755.9	8.9	64.9
February	1,604.7	153.7	1,758.4	8.7	64.9
March	1,609.1	151.3	1,760.4	8.6	64.9
April	1,612.8	149.2	1,762.0	8.5	64.8
May	1,616.2	147.4	1,763.6	8.4	64.8

LABOUR FORCE STATUS: Trend Series, Queensland

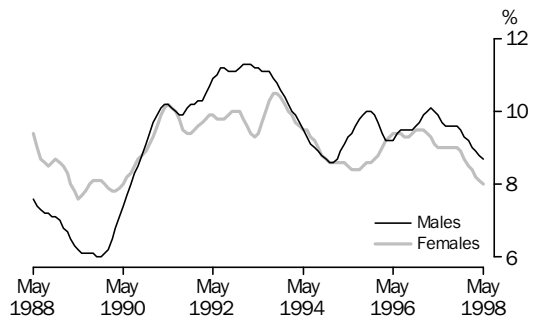
EMPLOYED MALES AND FEMALES



UNEMPLOYED MALES AND FEMALES



UNEMPLOYMENT RATE



PARTICIPATION RATE

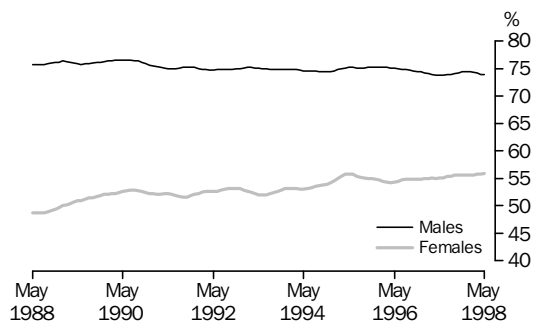


TABLE 4 — LABOUR FORCE STATUS: STATISTICAL REGIONS, QUEENSLAND, MAY 1998

Region	Employed			Unemployed '000	Labour force '000	Unem- ployment rate %	Partici- pation rate %
	Full-time '000	Part-time '000	Total '000				
MALES							
<i>Brisbane</i>	361.9	56.5	418.3	33.8	452.1	7.5	74.2
Brisbane City Inner Ring	89.2	16.5	105.7	7.6	113.2	6.7	72.1
Brisbane City Outer Ring	110.1	18.0	128.1	9.3	137.4	6.8	72.0
South and East BSD Balance	76.8	9.8	86.6	7.5	94.1	8.0	77.8
North and West BSD Balance	85.8	12.2	98.0	9.4	107.3	8.7	76.5
Gold Coast (Part A and Part B)(a)	78.0	18.4	96.4	10.9	107.3	10.1	67.7
<i>Balance of Queensland</i>	421.2	63.7	484.9	53.3	538.2	9.9	72.7
South and East Moreton	75.8	19.4	95.2	10.4	105.6	9.8	68.4
North and West Moreton	60.0	12.7	72.7	11.5	84.2	13.7	72.1
Wide Bay-Burnett	39.6	5.3	44.9	8.7	53.5	16.2	60.5
Darling Downs and South-West	60.3	5.1	65.4	3.3	68.7	4.8	75.4
Mackay, Fitzroy and Central-West	90.1	7.4	97.4	9.0	106.5	8.5	82.7
Northern and North-West	48.8	7.9	56.7	5.0	61.7	8.1	73.7
Far North	46.7	5.9	52.6	5.4	58.0	9.3	75.7
Queensland	783.1	120.2	903.2	87.1	990.3	8.8	73.4
FEMALES							
<i>Brisbane</i>	195.1	140.8	335.9	25.1	361.0	6.9	57.1
Brisbane City Inner Ring	62.6	31.6	94.2	3.5	97.8	3.6	61.9
Brisbane City Outer Ring	54.7	42.4	97.1	8.1	105.2	7.7	54.2
South and East BSD Balance	37.4	28.3	65.7	6.9	72.6	9.4	57.1
North and West BSD Balance	40.4	38.4	78.8	6.6	85.5	7.8	55.9
Gold Coast (Part A and Part B)(a)	39.2	37.5	76.7	8.3	85.0	9.7	53.6
<i>Balance of Queensland</i>	192.8	177.5	370.3	35.2	405.4	8.7	54.7
South and East Moreton	39.2	35.5	74.7	7.3	81.9	8.9	53.5
North and West Moreton	32.1	33.9	66.0	6.3	72.3	8.8	55.6
Wide Bay-Burnett	16.3	18.5	34.8	4.7	39.5	11.9	45.2
Darling Downs and South-West	26.3	23.7	50.0	3.4	53.4	6.4	57.9
Mackay, Fitzroy and Central-West	36.6	28.0	64.6	6.3	70.9	8.9	60.2
Northern and North-West	21.0	20.0	41.0	5.1	46.1	11.0	53.6
Far North	21.2	18.0	39.2	* 2.1	41.3	* 5.0	55.5
Queensland	387.9	318.3	706.2	60.2	766.4	7.9	55.8
PERSONS							
<i>Brisbane</i>	557.0	197.3	754.3	58.8	813.1	7.2	65.5
Brisbane City Inner Ring	151.8	48.1	199.9	11.1	211.0	5.2	67.0
Brisbane City Outer Ring	164.8	60.5	225.2	17.3	242.6	7.1	63.0
South and East BSD Balance	114.2	38.1	152.3	14.4	166.7	8.6	67.2
North and West BSD Balance	126.2	50.6	176.8	16.0	192.8	8.3	65.8
Gold Coast (Part A and Part B)(a)	117.2	55.9	173.1	19.1	192.3	10.0	60.6
<i>Balance of Queensland</i>	614.0	241.2	855.2	88.5	943.6	9.4	63.7
South and East Moreton	115.0	54.8	169.9	17.6	187.5	9.4	61.0
North and West Moreton	92.0	46.6	138.7	17.9	156.6	11.4	63.4
Wide Bay-Burnett	55.9	23.8	79.7	13.4	93.1	14.4	52.9
Darling Downs and South-West	86.5	28.8	115.3	6.7	122.1	5.5	66.6
Mackay, Fitzroy and Central-West	126.7	35.4	162.0	15.3	177.3	8.6	71.9
Northern and North-West	69.9	27.9	97.7	10.1	107.8	9.3	63.5
Far North	67.9	23.9	91.8	7.4	99.3	7.5	65.7
Queensland	1,170.9	438.5	1,609.4	147.3	1,756.7	8.4	64.5

(a) Part (A) included in South and East BSD Balance and Part (B) included in South and East Moreton.

TABLE 5 — LABOUR FORCE STATUS: STATISTICAL REGIONS, QUEENSLAND, APRIL 1998

Region	Employed			Unemployed '000	Labour force '000	Unem- ployment rate %	Partici- pation rate %
	Full-time '000	Part-time '000	Total '000				
MALES							
<i>Brisbane</i>	362.6	52.5	415.1	37.9	453.1	8.4	74.5
Brisbane City Inner Ring	84.5	15.6	100.1	8.5	108.6	7.8	69.9
Brisbane City Outer Ring	116.0	15.6	131.6	10.0	141.6	7.1	74.6
South and East BSD Balance	80.6	8.8	89.4	9.8	99.2	9.9	77.9
North and West BSD Balance	81.5	12.6	94.1	9.6	103.7	9.2	76.4
Gold Coast (Part A and Part B)(a)	78.9	16.0	94.9	10.9	105.8	10.3	69.9
<i>Balance of Queensland</i>	430.5	57.4	487.9	50.6	538.6	9.4	72.9
South and East Moreton	76.6	16.0	92.6	9.9	102.5	9.6	70.1
North and West Moreton	63.4	10.7	74.1	9.8	83.9	11.7	71.5
Wide Bay-Burnett	38.7	8.5	47.2	10.4	57.6	18.1	62.7
Darling Downs and South-West	59.8	5.4	65.2	* 2.5	67.7	* 3.6	74.7
Mackay, Fitzroy and Central-West	88.9	6.1	95.0	9.4	104.4	9.0	83.1
Northern and North-West	56.3	5.8	62.1	5.4	67.5	8.0	72.9
Far North	46.8	4.9	51.7	3.3	55.0	6.0	74.0
Queensland	793.1	109.9	903.0	88.6	991.6	8.9	73.6
FEMALES							
<i>Brisbane</i>	199.3	129.9	329.2	29.0	358.2	8.1	56.8
Brisbane City Inner Ring	58.7	29.1	87.8	5.7	93.5	6.1	60.8
Brisbane City Outer Ring	58.7	42.0	100.7	9.5	110.3	8.7	56.2
South and East BSD Balance	38.7	27.2	65.9	7.0	72.8	9.6	57.3
North and West BSD Balance	43.1	31.6	74.8	6.8	81.6	8.4	53.0
Gold Coast (Part A and Part B)(a)	40.4	41.9	82.3	7.8	90.1	8.7	56.4
<i>Balance of Queensland</i>	191.4	184.2	375.6	35.9	411.5	8.7	55.6
South and East Moreton	38.8	40.7	79.5	6.9	86.4	8.0	56.2
North and West Moreton	32.9	32.2	65.1	7.1	72.2	9.8	55.4
Wide Bay-Burnett	17.1	19.2	36.3	4.4	40.7	10.9	45.2
Darling Downs and South-West	25.6	22.6	48.2	3.4	51.6	6.5	58.2
Mackay, Fitzroy and Central-West	36.1	30.4	66.6	5.5	72.0	7.6	61.5
Northern and North-West	21.6	19.4	41.0	5.8	46.8	12.5	54.2
Far North	19.2	19.7	38.9	* 2.7	41.7	* 6.6	57.0
Queensland	390.7	314.1	704.8	64.9	769.7	8.4	56.1
PERSONS							
<i>Brisbane</i>	561.9	182.4	744.3	66.9	811.3	8.3	65.5
Brisbane City Inner Ring	143.2	44.7	187.9	14.2	202.1	7.0	65.4
Brisbane City Outer Ring	174.7	57.6	232.3	19.6	251.9	7.8	65.3
South and East BSD Balance	119.3	35.9	155.2	16.8	172.1	9.8	67.6
North and West BSD Balance	124.6	44.2	168.8	16.4	185.2	8.9	63.9
Gold Coast (Part A and Part B)(a)	119.3	57.8	177.2	18.8	195.9	9.6	63.0
<i>Balance of Queensland</i>	621.9	241.6	863.5	86.5	950.0	9.1	64.3
South and East Moreton	115.4	56.7	172.1	16.8	188.9	8.9	63.0
North and West Moreton	96.3	42.9	139.2	16.9	156.1	10.8	63.0
Wide Bay-Burnett	55.8	27.6	83.5	14.9	98.3	15.1	54.0
Darling Downs and South-West	85.4	28.0	113.4	5.8	119.2	4.9	66.5
Mackay, Fitzroy and Central-West	125.0	36.6	161.6	14.9	176.5	8.5	72.7
Northern and North-West	77.9	25.1	103.1	11.2	114.3	9.8	63.8
Far North	66.1	24.6	90.7	6.0	96.7	6.2	65.6
Queensland	1,183.8	424.0	1,607.8	153.5	1,761.3	8.7	64.8

(a) Part (A) included in South and East BSD Balance and Part (B) included in South and East Moreton.

TABLE 6 — LABOUR FORCE STATUS: STATISTICAL REGIONS, QUEENSLAND, MARCH 1998

Region	Employed			Unemployed '000	Labour force '000	Unem- ployment rate %	Partici- pation rate %
	Full-time '000	Part-time '000	Total '000				
MALES							
<i>Brisbane</i>	362.8	51.1	413.9	39.4	453.3	8.7	74.7
Brisbane City Inner Ring	86.2	13.9	100.1	10.3	110.4	9.4	70.7
Brisbane City Outer Ring	113.7	16.9	130.5	10.3	140.8	7.3	75.3
South and East BSD Balance	80.6	7.8	88.4	8.3	96.7	8.6	78.3
North and West BSD Balance	82.4	12.6	94.9	10.5	105.4	9.9	75.0
Gold Coast (Part A and Part B)(a)	82.8	17.0	99.8	9.3	109.2	8.6	71.2
<i>Balance of Queensland</i>	426.2	65.4	491.6	53.0	544.6	9.7	73.9
South and East Moreton	79.6	17.8	97.4	9.1	106.6	8.6	71.7
North and West Moreton	62.3	13.4	75.7	8.9	84.5	10.5	70.7
Wide Bay-Burnett	40.4	8.4	48.7	12.1	60.8	19.9	65.9
Darling Downs and South-West	56.8	8.1	65.0	3.3	68.2	4.8	75.3
Mackay, Fitzroy and Central-West	89.8	7.1	96.9	9.7	106.6	9.1	83.0
Northern and North-West	53.1	6.0	59.1	6.1	65.2	9.4	74.7
Far North	44.2	4.7	48.8	3.7	52.6	7.1	74.7
Queensland	789.0	116.5	905.5	92.4	997.9	9.3	74.2
FEMALES							
<i>Brisbane</i>	192.5	137.7	330.2	29.2	359.4	8.1	57.0
Brisbane City Inner Ring	55.6	32.1	87.7	6.9	94.6	7.3	59.5
Brisbane City Outer Ring	58.1	43.9	102.0	7.9	109.9	7.2	55.7
South and East BSD Balance	36.3	26.1	62.4	6.1	68.5	8.9	56.3
North and West BSD Balance	42.5	35.6	78.1	8.3	86.4	9.6	56.7
Gold Coast (Part A and Part B)(a)	39.6	39.1	78.7	10.8	89.5	12.1	54.6
<i>Balance of Queensland</i>	189.7	176.2	366.0	35.9	401.9	8.9	54.4
South and East Moreton	38.8	37.4	76.2	9.8	86.0	11.4	54.5
North and West Moreton	31.3	31.9	63.2	4.9	68.1	7.2	55.3
Wide Bay-Burnett	16.1	18.6	34.7	4.8	39.5	12.1	44.7
Darling Downs and South-West	25.1	23.2	48.3	* 2.1	50.4	* 4.1	54.0
Mackay, Fitzroy and Central-West	42.3	28.8	71.1	6.4	77.5	8.2	61.7
Northern and North-West	17.7	18.5	36.2	5.9	42.1	14.1	50.7
Far North	18.5	17.9	36.3	* 2.0	38.4	* 5.3	57.2
Queensland	382.3	314.0	696.2	65.1	761.3	8.6	55.6
PERSONS							
<i>Brisbane</i>	555.3	188.8	744.1	68.6	812.7	8.4	65.7
Brisbane City Inner Ring	141.8	46.0	187.8	17.2	205.0	8.4	65.1
Brisbane City Outer Ring	171.7	60.8	232.5	18.2	250.7	7.3	65.2
South and East BSD Balance	116.9	33.9	150.8	14.4	165.2	8.7	67.3
North and West BSD Balance	124.9	48.1	173.1	18.8	191.9	9.8	65.5
Gold Coast (Part A and Part B)(a)	122.5	56.1	178.5	20.2	198.7	10.2	62.6
<i>Balance of Queensland</i>	615.9	241.7	857.6	88.9	946.5	9.4	64.1
South and East Moreton	118.4	55.2	173.6	19.0	192.6	9.8	62.9
North and West Moreton	93.6	45.3	138.9	13.8	152.6	9.0	62.9
Wide Bay-Burnett	56.5	26.9	83.4	16.9	100.3	16.8	55.6
Darling Downs and South-West	81.9	31.4	113.3	5.3	118.6	4.5	64.5
Mackay, Fitzroy and Central-West	132.1	35.8	167.9	16.1	184.0	8.7	72.4
Northern and North-West	70.8	24.5	95.3	12.1	107.4	11.2	63.0
Far North	62.6	22.5	85.1	5.8	90.9	6.4	66.1
Queensland	1,171.2	430.5	1,601.7	157.5	1,759.2	9.0	64.8

(a) Part (A) included in South and East BSD Balance and Part (B) included in South and East Moreton.

TABLE 7 — LABOUR FORCE STATUS: AGE BY MAJOR STATISTICAL REGION, QUEENSLAND, MAY 1998

Age group (years)	Employed			Unemployed '000	Labour force '000	Unem- ployment rate %	Partici- pation rate %
	Full-time '000	Part-time '000	Total '000				
BRISBANE MAJOR STATISTICAL REGION							
15-24	86.9	64.2	151.2	25.1	176.3	14.2	71.6
15-19	18.5	40.4	58.9	11.4	70.3	16.2	60.3
20-24	68.4	23.9	92.3	13.7	106.0	12.9	81.8
25-44	304.2	78.0	382.3	23.3	405.6	5.7	82.7
45 and over	165.8	55.0	220.8	10.4	231.2	4.5	45.8
Total	557.0	197.3	754.3	58.8	813.1	7.2	65.5
BALANCE OF QUEENSLAND							
15-24	97.9	61.1	159.0	31.7	190.8	16.6	71.2
15-19	27.6	40.3	67.8	14.6	82.5	17.8	60.2
20-24	70.3	20.9	91.2	17.1	108.3	15.8	82.8
25-44	320.9	104.3	425.2	38.0	463.2	8.2	81.6
45 and over	195.1	75.8	270.9	18.8	289.7	6.5	44.9
Total	614.0	241.2	855.2	88.5	943.6	9.4	63.7
QUEENSLAND							
15-24	184.9	125.4	310.2	56.8	367.0	15.5	71.4
15-19	46.1	80.6	126.7	26.0	152.7	17.0	60.2
20-24	138.8	44.8	183.6	30.8	214.3	14.4	82.3
25-44	625.2	182.3	807.5	61.3	868.7	7.1	82.1
45 and over	360.9	130.8	491.7	29.2	520.9	5.6	45.3
Total	1,170.9	438.5	1,609.4	147.3	1,756.7	8.4	64.5

UNEMPLOYMENT RATE BY AGE, QUEENSLAND

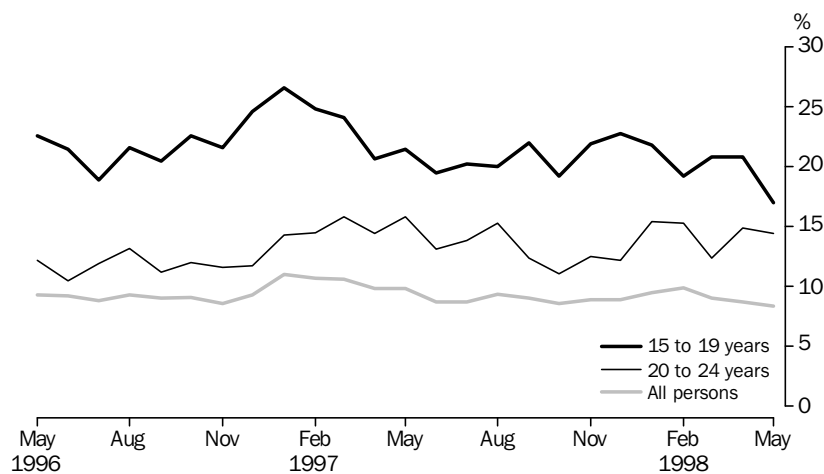


TABLE 8 — LABOUR FORCE STATUS: PERSONS AGED 15 TO 19 YEARS BY FULL-TIME ATTENDANCE AT AN EDUCATIONAL INSTITUTION, QUEENSLAND, MAY 1998

Sex	Employed			Unemployed	Labour force	Not in labour force	Civilian population aged 15 to 19 years	Unemployment rate	Participation rate
	Full-time	Part-time	Total						
	'000	'000	'000	'000	'000	'000	'000	%	%
ATTENDING NEITHER SCHOOL NOR A TERTIARY EDUCATIONAL INSTITUTION FULL-TIME									
Males	28.5	8.3	36.8	8.0	44.9	4.2	49.1	17.9	91.4
Females	16.2	10.9	27.2	7.5	34.7	4.7	39.3	21.7	88.1
Persons	44.8	19.2	64.0	15.6	79.5	8.9	88.4	19.6	89.9
ATTENDING A TERTIARY EDUCATIONAL INSTITUTION FULL-TIME									
Males	* 0.3	9.7	10.0	* 1.6	11.5	10.4	22.0	* 13.7	52.6
Females	* 0.8	13.0	13.8	* 0.7	14.5	10.3	24.8	* 4.9	58.6
Persons	* 1.1	22.7	23.7	* 2.3	26.0	20.7	46.7	* 8.8	55.7
ATTENDING SCHOOL									
Males	* 0.2	17.0	17.3	4.2	21.4	38.1	59.6	19.5	36.0
Females	* 0.0	21.7	21.7	4.0	25.7	33.2	58.9	15.6	43.7
Persons	* 0.2	38.7	39.0	8.2	47.2	71.3	118.4	17.4	39.8
TOTAL									
Males	29.0	35.0	64.0	13.8	77.8	52.8	130.6	17.7	59.6
Females	17.0	45.6	62.7	12.2	74.9	48.1	123.0	16.3	60.9
Persons	46.1	80.6	126.7	26.0	152.7	100.9	253.6	17.0	60.2

TABLE 9 — LABOUR FORCE STATUS: PERSONS AGED 20 TO 24 YEARS BY FULL-TIME ATTENDANCE AT A TERTIARY INSTITUTION, QUEENSLAND, MAY 1998

Sex	Employed			Unemployed	Labour force	Not in labour force	Civilian population aged 20 to 24 years	Unemployment rate	Participation rate
	Full-time	Part-time	Total						
	'000	'000	'000	'000	'000	'000	'000	%	%
NOT ATTENDING A TERTIARY EDUCATIONAL INSTITUTION FULL-TIME									
Males	80.0	10.1	90.0	17.3	107.3	6.0	113.3	16.1	94.7
Females	58.0	18.7	76.7	11.3	88.0	17.0	105.0	12.8	83.8
Persons	138.0	28.8	166.8	28.6	195.3	23.0	218.4	14.6	89.5
ATTENDING A TERTIARY EDUCATIONAL INSTITUTION FULL-TIME									
Males	* 0.3	7.1	7.4	* 0.5	7.8	11.5	19.3	* 5.8	40.6
Females	* 0.5	8.9	9.4	* 1.7	11.1	11.6	22.7	* 15.5	49.1
Persons	* 0.8	16.0	16.8	* 2.2	19.0	23.0	42.0	* 11.5	45.2
TOTAL									
Males	80.2	17.2	97.4	17.8	115.2	17.4	132.6	15.4	86.9
Females	58.5	27.6	86.1	13.0	99.1	28.6	127.8	13.1	77.6
Persons	138.8	44.8	183.6	30.8	214.3	46.0	260.4	14.4	82.3

TABLE 10 — EMPLOYED PERSONS: FULL-TIME OR PART-TIME STATUS, QUEENSLAND

Month	Females											
	Males		Married				Not married		Total		Persons	
	Full-time	Part-time	Full-time	Part-time	Full-time	Part-time	Full-time	Part-time	Full-time	Part-time		
	'000											
1997 —												
March	756.6	109.0	221.4	193.0	153.0	102.7	374.4	295.6	1,131.0	404.7		
April	762.4	109.0	218.7	197.8	151.1	103.6	369.8	301.4	1,132.2	410.5		
May	767.6	107.0	223.7	193.9	149.5	102.0	373.2	295.9	1,140.8	402.9		
June	768.4	119.6	216.2	207.0	152.4	105.2	368.5	312.2	1,137.0	431.8		
July	790.7	103.7	215.9	202.9	166.1	97.7	382.0	300.6	1,172.7	404.3		
August	772.4	110.4	223.6	190.3	156.2	101.9	379.9	292.2	1,152.3	402.7		
September	781.3	113.0	218.7	204.8	164.1	107.4	382.9	312.2	1,164.2	425.2		
October	787.1	117.9	218.9	198.7	163.6	113.4	382.5	312.1	1,169.6	430.0		
November	781.5	112.2	223.4	197.9	162.8	112.9	386.2	310.9	1,167.7	423.1		
December	795.7	114.8	231.4	185.6	173.1	106.6	404.5	292.2	1,200.2	407.0		
1998 —												
January	792.6	108.5	222.3	175.7	164.3	108.2	386.6	283.9	1,179.2	392.4		
February	792.1	113.1	230.6	195.8	160.0	111.8	390.6	307.6	1,182.7	420.7		
March	789.0	116.5	220.2	204.5	162.0	109.4	382.3	314.0	1,171.2	430.5		
April	793.1	109.9	229.3	197.7	161.4	116.4	390.7	314.1	1,183.8	424.0		
May	783.1	120.2	228.2	201.4	159.6	116.9	387.9	318.3	1,170.9	438.5		
	PER CENT (a)											
1997 —												
March	87.4	12.6	53.4	46.6	59.9	40.1	55.9	44.1	73.6	26.4		
April	87.5	12.5	52.5	47.5	59.3	40.7	55.1	44.9	73.4	26.6		
May	87.8	12.2	53.6	46.4	59.4	40.6	55.8	44.2	73.9	26.1		
June	86.5	13.5	51.1	48.9	59.2	40.8	54.1	45.9	72.5	27.5		
July	88.4	11.6	51.6	48.4	63.0	37.0	56.0	44.0	74.4	25.6		
August	87.5	12.5	54.0	46.0	60.5	39.5	56.5	43.5	74.1	25.9		
September	87.4	12.6	51.6	48.4	60.4	39.6	55.1	44.9	73.2	26.8		
October	87.0	13.0	52.4	47.6	59.1	40.9	55.1	44.9	73.1	26.9		
November	87.4	12.6	53.0	47.0	59.0	41.0	55.4	44.6	73.4	26.6		
December	87.4	12.6	55.5	44.5	61.9	38.1	58.1	41.9	74.7	25.3		
1998 —												
January	88.0	12.0	55.9	44.1	60.3	39.7	57.7	42.3	75.0	25.0		
February	87.5	12.5	54.1	45.9	58.9	41.1	55.9	44.1	73.8	26.2		
March	87.1	12.9	51.8	48.2	59.7	40.3	54.9	45.1	73.1	26.9		
April	87.8	12.2	53.7	46.3	58.1	41.9	55.4	44.6	73.6	26.4		
May	86.7	13.3	53.1	46.9	57.7	42.3	54.9	45.1	72.8	27.2		

(a) Full-time and part-time as a proportion of employed persons in each category.

**TABLE 11 — EMPLOYED PERSONS: AVERAGE HOURS WORKED BY STATUS IN EMPLOYMENT,
INDUSTRY DIVISION AND OCCUPATION GROUP,
QUEENSLAND, MAY 1998**

<i>Status in employment, industry division and occupation group</i>	<i>Females</i>			<i>Total</i>	<i>Persons</i>
	<i>Males</i>	<i>Married</i>	<i>Not married</i>		
Status in employment					
Employers	47.6	32.5	48.5	34.1	42.8
Own account workers	40.9	28.0	33.4	29.2	37.2
Employees	37.4	27.7	26.9	27.3	32.8
Contributing family workers	16.6	14.1	22.1	15.6	16.0
Industry division					
Agriculture, forestry and fishing	44.0	30.5	28.9	30.1	40.0
Mining	38.2	* 36.8	* 47.1	40.7	38.4
Manufacturing	38.0	27.0	30.5	28.0	35.7
Electricity, gas and water supply	41.0	* 31.7	* 0.0	* 31.7	40.1
Construction	36.7	19.1	31.0	20.9	34.2
Wholesale trade	39.9	27.9	33.1	29.5	36.8
Retail trade	35.5	27.7	21.0	24.3	29.6
Accommodation, cafes and restaurants	37.4	32.4	21.9	26.9	31.5
Transport and storage	42.6	27.6	33.5	30.0	39.5
Communication services	39.3	38.6	26.2	34.5	38.1
Finance and insurance	37.6	27.3	32.1	28.8	32.1
Property and business services	38.3	28.2	32.0	29.9	34.6
Government administration and defence	36.6	27.3	27.8	27.5	32.4
Education	35.4	28.9	31.7	29.8	31.6
Health and community services	36.7	26.5	28.2	27.1	29.3
Cultural and recreational services	37.8	23.7	28.5	25.8	31.8
Personal and other services	35.9	27.4	28.7	28.0	31.7
Occupation group					
Managers and administrators	47.8	33.0	39.6	34.4	44.8
Professionals	38.8	30.7	34.8	32.1	35.5
Associate professionals	44.0	36.0	37.7	36.5	41.1
Tradespersons and related workers	37.5	32.0	29.8	31.1	36.9
Advanced clerical and service workers	37.4	21.9	31.8	24.6	25.9
Intermediate clerical, sales and service workers	35.1	25.7	26.7	26.1	28.4
Intermediate production and transport workers	38.8	28.1	33.0	29.5	37.8
Elementary clerical, sales and service workers	30.6	25.0	19.5	21.6	24.7
Labourers and related workers	31.6	23.9	22.9	23.5	28.8
Full-time workers	41.7	37.9	36.3	37.2	40.2
Part-time workers	15.5	16.1	15.1	15.7	15.7
Total	38.2	27.7	27.4	27.6	33.5

TABLE 12 — EMPLOYED PERSONS: STATUS IN EMPLOYMENT, INDUSTRY DIVISION AND OCCUPATION GROUP, QUEENSLAND, MAY 1998
(’000)

Particulars	Females				Persons
	Males	Married	Not married	Total	
Status in employment					
Employers	44.8	22.6	* 2.6	25.2	70.0
Own account workers	120.3	42.6	12.8	55.4	175.7
Employees	732.9	356.1	259.1	615.3	1,348.2
Contributing family workers	5.2	8.3	* 2.0	10.3	15.6
Industry division					
Agriculture, forestry and fishing	64.2	18.8	7.0	25.9	90.1
Mining	19.5	* 1.3	* 0.8	* 2.1	21.6
Manufacturing	134.5	28.5	11.8	40.3	174.9
Electricity, gas and water supply	9.1	* 0.9	* 0.0	* 0.9	10.0
Construction	108.9	17.6	* 3.2	20.8	129.7
Wholesale trade	70.9	20.5	9.2	29.6	100.6
Retail trade	115.0	63.1	65.7	128.8	243.8
Accommodation, cafes and restaurants	37.5	23.3	25.2	48.5	86.0
Transport and storage	66.2	12.7	9.1	21.7	87.9
Communication services	18.8	4.1	* 2.0	6.1	24.9
Finance and insurance	18.3	20.8	9.6	30.4	48.7
Property and business services	87.4	38.6	31.3	69.9	157.3
Government administration and defence	29.2	14.3	10.8	25.1	54.3
Education	38.7	57.3	25.6	82.9	121.6
Health and community services	35.7	77.9	42.3	120.2	155.9
Cultural and recreational services	17.9	10.5	7.6	18.1	36.0
Personal and other services	31.3	19.4	15.3	34.7	66.1
Occupation group					
Managers and administrators	83.2	18.7	5.2	23.9	107.1
Professionals	123.9	81.4	42.0	123.4	247.2
Associate professionals	109.5	47.4	19.9	67.3	176.9
Tradespersons and related workers	192.5	12.7	8.9	21.5	214.0
Advanced clerical and service workers	7.5	49.5	18.5	68.0	75.4
Intermediate clerical, sales and service workers	74.4	129.4	83.5	212.8	287.2
Intermediate production and transport workers	137.4	12.0	4.9	16.9	154.3
Elementary clerical, sales and service workers	59.6	42.9	70.4	113.2	172.9
Labourers and related workers	115.1	35.7	23.4	59.2	174.3
Total	903.2	429.6	276.6	706.2	1,609.4

TABLE 13 — EMPLOYED PERSONS: INDUSTRY DIVISION BY OCCUPATION GROUP, QUEENSLAND, MAY 1998
(’000)

Industry division	Occupation group									Total
	Managers and administrators	Professionals	Associate professionals	Tradespersons and related workers	Advanced clerical and service workers	Intermediate clerical sales and service workers	Intermediate production and transport workers	Elementary clerical sales and service workers	Labourers and related workers	
Agriculture, forestry and fishing	47.2	* 1.9	* 1.4	* 3.3	* 1.5	* 1.3	7.4	* 0.2	25.9	90.1
Mining	* 0.6	3.9	* 1.3	4.8	* 0.7	* 0.7	8.5	* 0.0	* 1.2	21.6
Manufacturing	9.2	9.6	10.1	54.1	4.4	16.6	31.4	3.5	35.9	174.9
Electricity, gas and water	* 0.2	* 2.5	* 1.5	* 2.5	* 0.0	* 1.2	* 1.0	* 0.0	* 1.0	10.0
Construction	10.7	* 2.9	6.3	57.6	8.5	9.5	15.5	* 1.0	17.6	129.7
Wholesale trade	10.4	9.6	9.9	9.0	5.3	25.4	15.5	9.9	5.5	100.6
Retail trade	* 2.8	4.5	36.9	33.9	4.4	19.1	21.1	103.1	17.9	243.8
Accommodation, cafes and restaurants	* 0.3	* 0.5	19.9	7.3	* 1.2	31.4	* 0.6	8.8	16.0	86.0
Transport and storage	* 1.0	5.8	4.9	5.9	5.2	13.7	39.2	7.5	4.8	87.9
Communication services	* 0.5	* 2.5	* 3.1	4.4	* 0.2	3.8	* 2.7	7.5	* 0.2	24.9
Finance and insurance	* 1.3	4.1	12.6	* 0.3	7.7	21.3	* 0.3	* 1.2	* 0.0	48.7
Property and business services	5.5	43.5	25.0	5.1	20.7	22.0	* 2.1	10.4	22.9	157.3
Government administration and defence	* 3.2	13.8	5.9	* 2.6	4.4	18.4	* 2.4	* 2.4	* 1.2	54.3
Education	6.4	73.3	4.0	* 2.3	4.3	25.0	* 0.0	* 1.6	4.8	121.6
Health and community services	5.5	52.4	16.1	3.7	3.5	58.9	* 1.5	3.6	10.7	155.9
Cultural and recreational services	* 0.5	9.8	5.4	* 2.4	* 0.5	8.3	* 1.6	5.6	* 1.8	36.0
Personal and other services	* 2.0	6.7	12.4	14.8	* 2.8	10.5	3.5	6.5	6.8	66.1
Total	107.1	247.2	176.9	214.0	75.4	287.2	154.3	172.9	174.3	1,609.4

TABLE 14 — UNEMPLOYED PERSONS: DURATION OF UNEMPLOYMENT, BRISBANE MAJOR STATISTICAL REGION

Duration of unemployment	1997			1998		
	March	April	May	March	April	May
MALES						
	'000	'000	'000	'000	'000	'000
Unemployed						
Under 4 weeks	8.7	4.9	4.8	8.0	5.7	5.9
4 and under 8 weeks	4.1	4.6	6.0	4.9	4.4	3.8
8 and under 13 weeks	8.0	3.8	4.2	5.7	5.8	* 2.2
13 and under 26 weeks	9.0	12.2	10.0	6.7	6.5	8.6
26 and under 52 weeks	8.5	6.9	6.7	4.6	4.8	4.0
52 weeks and over	10.3	11.9	10.8	9.5	10.7	9.3
Total	48.7	44.3	42.4	39.4	37.9	33.8
	<i>weeks</i>	<i>weeks</i>	<i>weeks</i>	<i>weeks</i>	<i>weeks</i>	<i>weeks</i>
Median duration of unemployment	14	18	21	15	15	18
FEMALES						
	'000	'000	'000	'000	'000	'000
Unemployed						
Under 4 weeks	6.0	6.4	6.3	5.5	6.0	5.0
4 and under 8 weeks	4.0	4.0	3.8	6.3	3.6	* 2.2
8 and under 13 weeks	4.9	3.5	4.9	* 2.9	5.3	* 3.1
13 and under 26 weeks	5.3	4.1	5.0	* 3.3	6.0	3.8
26 and under 52 weeks	* 2.9	4.4	6.1	4.1	* 3.2	4.3
52 weeks and over	5.3	* 3.1	5.1	7.1	5.0	6.7
Total	28.5	25.6	31.4	29.2	29.0	25.1
	<i>weeks</i>	<i>weeks</i>	<i>weeks</i>	<i>weeks</i>	<i>weeks</i>	<i>weeks</i>
Median duration of unemployment	11	10	13	12	12	18
PERSONS						
	'000	'000	'000	'000	'000	'000
Unemployed						
Under 4 weeks	14.8	11.4	11.1	13.5	11.7	10.8
4 and under 8 weeks	8.1	8.6	9.8	11.2	8.1	6.0
8 and under 13 weeks	12.9	7.3	9.1	8.6	11.1	5.4
13 and under 26 weeks	14.4	16.4	15.0	10.0	12.4	12.4
26 and under 52 weeks	11.4	11.3	12.8	8.7	8.0	8.2
52 weeks and over	15.6	15.0	15.9	16.6	15.6	16.0
Total	77.2	69.9	73.8	68.6	66.9	58.8
	<i>weeks</i>	<i>weeks</i>	<i>weeks</i>	<i>weeks</i>	<i>weeks</i>	<i>weeks</i>
Median duration of unemployment	14	15	18	13	14	18

TABLE 15 — UNEMPLOYED PERSONS: DURATION OF UNEMPLOYMENT, BALANCE OF QUEENSLAND

Duration of unemployment	1997			1998		
	March	April	May	March	April	May
MALES						
	'000	'000	'000	'000	'000	'000
Unemployed						
Under 4 weeks	8.7	10.0	6.0	4.9	7.2	7.6
4 and under 8 weeks	6.5	5.1	7.2	7.1	3.5	4.2
8 and under 13 weeks	11.9	5.9	5.0	6.3	3.7	3.9
13 and under 26 weeks	10.5	13.6	11.7	9.2	12.1	9.9
26 and under 52 weeks	8.7	7.4	9.5	7.6	7.7	9.8
52 weeks and over	15.4	14.3	13.7	18.0	16.5	17.9
Total	61.7	56.2	53.2	53.0	50.6	53.3
	<i>weeks</i>	<i>weeks</i>	<i>weeks</i>	<i>weeks</i>	<i>weeks</i>	<i>weeks</i>
Median duration of unemployment	15	16	20	23	19	26
FEMALES						
	'000	'000	'000	'000	'000	'000
Unemployed						
Under 4 weeks	8.3	8.3	6.2	7.8	6.1	6.0
4 and under 8 weeks	6.4	* 3.1	5.4	6.3	5.1	3.7
8 and under 13 weeks	6.3	6.4	4.5	5.0	5.2	3.7
13 and under 26 weeks	7.5	10.3	7.7	5.0	6.1	7.3
26 and under 52 weeks	4.0	5.1	7.7	3.8	4.7	4.0
52 weeks and over	10.4	8.4	8.6	8.2	8.6	10.4
Total	42.8	41.7	40.0	35.9	35.9	35.2
	<i>weeks</i>	<i>weeks</i>	<i>weeks</i>	<i>weeks</i>	<i>weeks</i>	<i>weeks</i>
Median duration of unemployment	13	14	19	11	14	18
PERSONS						
	'000	'000	'000	'000	'000	'000
Unemployed						
Under 4 weeks	17.0	18.3	12.2	12.6	13.4	13.6
4 and under 8 weeks	12.9	8.3	12.6	13.3	8.5	7.9
8 and under 13 weeks	18.2	12.3	9.5	11.3	8.9	7.6
13 and under 26 weeks	17.9	23.9	19.4	14.2	18.3	17.3
26 and under 52 weeks	12.7	12.5	17.2	11.3	12.4	13.8
52 weeks and over	25.8	22.7	22.2	26.2	25.1	28.2
Total	104.5	98.0	93.1	88.9	86.5	88.5
	<i>weeks</i>	<i>weeks</i>	<i>weeks</i>	<i>weeks</i>	<i>weeks</i>	<i>weeks</i>
Median duration of unemployment	14	15	20	17	18	23

TABLE 16 — UNEMPLOYED PERSONS: DURATION OF UNEMPLOYMENT, QUEENSLAND

Duration of unemployment	1997			1998		
	March	April	May	March	April	May
MALES						
	'000	'000	'000	'000	'000	'000
Unemployed						
Under 4 weeks	17.5	14.9	10.8	12.9	12.9	13.5
4 and under 8 weeks	10.7	9.7	13.2	12.0	7.9	8.0
8 and under 13 weeks	19.9	9.6	9.2	12.0	9.5	6.1
13 and under 26 weeks	19.5	25.8	21.7	16.0	18.6	18.6
26 and under 52 weeks	17.2	14.2	16.3	12.2	12.5	13.8
52 weeks and over	25.7	26.2	24.5	27.4	27.1	27.2
Total	110.4	100.6	95.6	92.4	88.6	87.1
	<i>weeks</i>	<i>weeks</i>	<i>weeks</i>	<i>weeks</i>	<i>weeks</i>	<i>weeks</i>
Median duration of unemployment	15	17	21	20	18	22
FEMALES						
	'000	'000	'000	'000	'000	'000
Unemployed						
Under 4 weeks	14.3	14.8	12.5	13.3	12.1	11.0
4 and under 8 weeks	10.4	7.2	9.2	12.5	8.7	5.9
8 and under 13 weeks	11.3	9.9	9.4	7.9	10.5	6.9
13 and under 26 weeks	12.8	14.4	12.8	8.2	12.1	11.1
26 and under 52 weeks	6.9	9.5	13.8	7.9	7.9	8.3
52 weeks and over	15.7	11.6	13.6	15.3	13.6	17.0
Total	71.3	67.4	71.3	65.1	64.9	60.2
	<i>weeks</i>	<i>weeks</i>	<i>weeks</i>	<i>weeks</i>	<i>weeks</i>	<i>weeks</i>
Median duration of unemployment	12	13	17	12	13	18
PERSONS						
	'000	'000	'000	'000	'000	'000
Unemployed						
Under 4 weeks	31.7	29.7	23.3	26.1	25.0	24.4
4 and under 8 weeks	21.0	16.9	22.5	24.5	16.6	13.9
8 and under 13 weeks	31.1	19.5	18.6	19.9	20.0	13.0
13 and under 26 weeks	32.3	40.3	34.5	24.2	30.7	29.7
26 and under 52 weeks	24.1	23.8	30.0	20.0	20.4	22.1
52 weeks and over	41.4	37.8	38.1	42.8	40.7	44.2
Total	181.8	167.9	166.9	157.5	153.5	147.3
	<i>weeks</i>	<i>weeks</i>	<i>weeks</i>	<i>weeks</i>	<i>weeks</i>	<i>weeks</i>
Median duration of unemployment	14	15	19	15	16	20

TABLE 17 — UNEMPLOYED PERSONS AND UNEMPLOYMENT RATES: INDUSTRY DIVISION AND OCCUPATION GROUP OF LAST FULL-TIME JOB, QUEENSLAND

Unemployment category, industry division and occupation group	May 1997		August 1997		November 1997		February 1998		May 1998	
	Number	Rate	Number	Rate	Number	Rate	Number	Rate	Number	Rate
	'000	%	'000	%	'000	%	'000	%	'000	%
Persons who had worked full-time for 2 weeks or more in the last 2 years	91.9	5.6	82.4	5.0	81.4	4.9	93.4	5.5	75.5	4.5
Industry division										
Agriculture, forestry and fishing	5.5	5.5	5.7	5.0	6.7	6.2	8.8	8.7	4.3	4.5
Manufacturing	14.4	7.4	11.1	5.8	14.1	7.5	12.6	6.7	14.2	7.5
Construction	12.7	9.4	9.7	7.6	5.6	4.3	8.9	6.4	7.6	5.5
Wholesale trade	5.6	6.6	4.1	5.1	* 3.1	* 3.7	5.8	5.9	4.5	4.2
Retail trade	11.4	4.4	14.1	5.5	14.4	5.4	16.8	6.2	11.3	4.4
Property and business services	6.8	4.6	7.3	4.7	6.8	4.1	8.5	4.9	6.7	4.1
Health and community services	4.0	2.6	3.8	2.5	4.9	3.3	4.4	2.9	3.7	2.3
Cultural and recreational services	* 1.7	* 4.7	* 2.3	* 5.5	* 2.9	* 6.7	* 1.5	* 4.1	* 2.7	* 6.8
Other industries	29.9	5.6	24.3	4.7	22.8	4.2	26.2	4.8	20.6	3.8
Occupation group										
Managers and administrators	* 1.0	* 0.9	* 0.9	* 0.7	* 2.0	* 1.7	* 1.2	* 1.1	* 1.8	* 1.6
Professionals	5.8	2.4	4.2	1.8	5.0	2.1	6.6	2.7	3.8	1.5
Associate professionals	6.0	3.3	8.8	4.7	6.6	3.5	8.1	4.5	5.2	2.8
Tradespersons and related workers	14.6	6.3	14.9	6.5	8.7	4.0	13.0	5.5	13.0	5.7
Advanced clerical and service workers	* 2.0	* 2.9	* 1.6	* 2.2	* 1.4	* 1.9	* 1.0	* 1.2	* 1.0	* 1.2
Intermediate clerical, sales and service workers	12.3	4.6	12.1	4.4	12.6	4.3	15.1	5.2	11.1	3.7
Intermediate production and transport workers	13.8	9.1	10.4	7.0	11.0	7.0	12.7	7.5	9.7	5.9
Elementary clerical, sales and service workers	12.1	6.7	10.4	5.9	8.9	4.6	10.9	5.7	7.6	4.2
Labourers and related workers	23.4	11.7	19.0	9.3	25.3	13.0	24.9	12.5	22.4	11.3
Reason for ceasing last full-time job										
Job loser										
Laid off, retrenched	37.7	..	31.3	..	31.8	..	36.1	..	32.0	..
Other	20.8	..	20.3	..	22.9	..	25.8	..	19.4	..
Job leaver	33.4	..	30.8	..	26.7	..	31.5	..	24.0	..
Other										
Persons looking for first job	11.7	..	12.7	..	17.4	..	14.5	..	11.3	..
Former workers	59.0	..	62.8	..	51.9	..	63.8	..	58.1	..
Persons stood down	4.3	..	* 2.9	..	5.1	..	4.8	..	* 2.4	..
Total	166.9	9.8	160.8	9.4	155.9	8.9	176.5	9.9	147.3	8.4
Looking for full-time work	132.0	10.4	131.5	10.2	122.2	9.5	140.9	10.6	117.1	9.1
Looking for part-time work	34.9	8.0	29.3	6.8	33.6	7.4	35.5	7.8	30.2	6.4

SPECIAL SURVEYS DATA

Although emphasis in the population survey is placed on the regular collection of demographic and labour force characteristics data, supplementary and special surveys of particular aspects of the labour force are carried out from time to time. The results of these surveys on labour force and related topics are published separately as shown below. All publications refer to Australia.

<i>Title of publication</i>	<i>Latest data</i>	<i>Catalogue No.</i>
Annual and Long Service Leave Taken	May 1988 to April 1989	6317.0
Career Experience	November 1996	6254.0
Career Paths of Persons with Trade Qualifications	1993	6243.0
Career Paths of Qualified Nurses, Australia	March to July 1989	6277.0
Child Care	March 1996	4402.0
Employment Benefits	August 1994	6334.0.40.001
Job Search Experience of Unemployed Persons	July 1997	6222.0
Labour Force Experience	February 1995	6206.0.40.001
Labour Force Status and Educational Attainment	February 1994	6235.0
Labour Force Status and Other Characteristics of Families	June 1997	6224.0
Labour Force Status and Other Characteristics of Migrants	November 1996	6250.0
Labour Mobility	February 1996	6209.0
Multiple Jobholding	August 1997	6216.0
Participation in Education (<i>formerly</i> Labour Force Status and Educational Attendance)	September 1997	6272.0
Persons Employed at Home	September 1996	6275.0
Persons not in the Labour Force	September 1997	6220.0
Persons Who Had Re-entered the Labour Force	July 1995	6264.0.40.001
Persons Who Have Left the Labour Force	September 1994	6267.0.40.001
Retirement and Retirement Intentions	November 1997	6238.0
Successful and Unsuccessful Job Search Experience	July 1996	6245.0
Superannuation	November 1995	6319.0
Survey of Income and Housing Costs and Amenities	1989-90	6546.0
Trade Union Members	August 1996	6325.0
Training and Education Experience (<i>formerly</i> How Workers Get Their Training)	1993	6278.0
Transition from Education to Work	May 1997	6227.0
Underemployed Workers	September 1996	6265.0
Weekly Earnings of Employees (Distribution)	August 1995	6310.0.40.001
Working Arrangements	August 1997	6342.0

LABOUR FORCE SUPPLEMENTARY SURVEY PROGRAM — 1998

<i>Topic</i>	<i>Survey month</i>
Labour Mobility	February 1998
Transition from Education to Work	May 1998
Job Search Experience of Unemployed Persons	July 1998
Successful and Unsuccessful Job Search Experience	July 1998
Multiple Jobholding	July 1998
Weekly Earnings	August 1998
Employment Benefits	August 1998
Trade Union Members	August 1998
Non-Standard Employment	August 1998
Persons not in the Labour Force	September 1998
Underemployment	September 1998
Participation in Education	September 1998
Career Experience	November 1998

RELEASES OF INTEREST

Employer Training Practices, Australia, February 1997 (6356.0), (\$24.00).

Provides extensive information on employer training in Australia. Statistics on type of training employees receive and how it is planned and evaluated are produced by employer size and industry for both public and private sectors. Factors affecting training expenditure, type of training providers used and the number of qualified trainers are also included.

Multiple Jobholding, Australia, August 1997 (6216.0), (\$18.00).

Provides information on persons who are holding more than one job classified by occupation of main and second jobs, status of worker in main and second jobs, hours worked in main and second jobs, industry of main and second jobs, status of employment in main and second jobs and weekly earnings in main and second jobs.

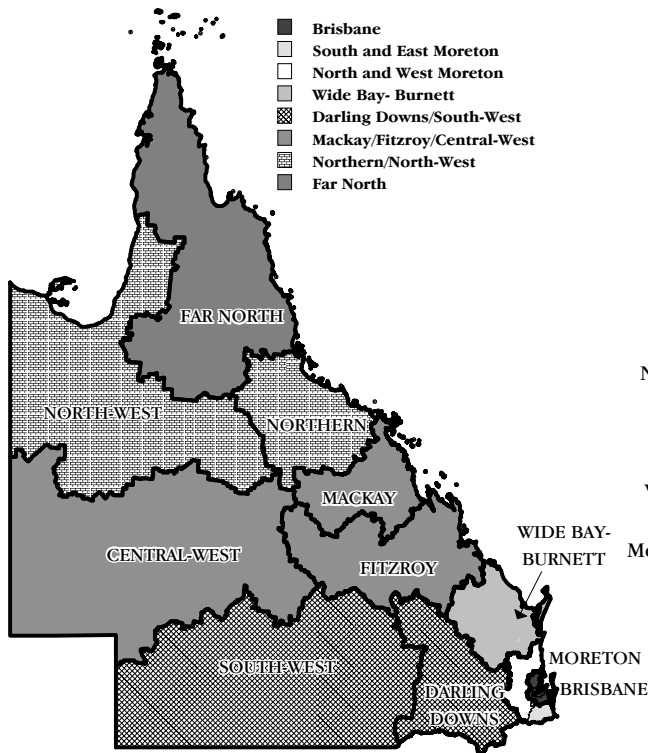
Participation in Education, Australia, September 1997 (6272.0), (\$18.50).

Contains data on the civilian population aged 15–24, whether attending an educational institution, type of institution, level of course attending and broad field of study, whether full-time or part-time and the type of school last attended/attending. Data are cross-classified by the usual demographic and labour force characteristics.

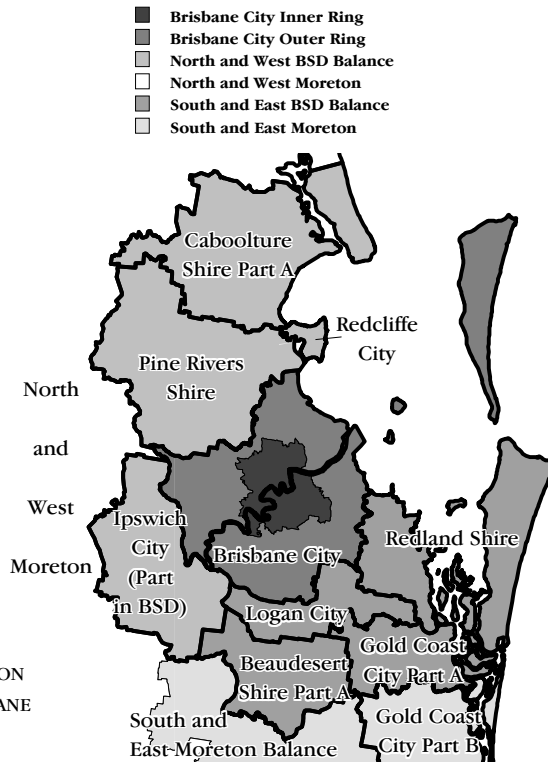
Retirement and Retirement Intentions, Australia, November 1997 (6238.0), (\$21.00).

For persons aged 45 and over, information is presented on retirement from the labour force, retirement from full-time work and those who are still working. Data collected include: age at retirement; current age; time since retirement and superannuation or life assurance coverage. For persons who have retired from full-time work, data is also presented on sources of income; occupation in, and reason for ceasing last full-time job. Similar information is also collected for persons who intend to retire.

STATISTICAL REGIONS, QUEENSLAND



STATISTICAL REGIONS, BRISBANE AND MORETON DIVISIONS



BRISBANE CITY INNER RING

Albion	Clayfield	Highgate Hill	Red Hill
Alderley	Coorparoo	Holland Park	Sherwood
Annerley	Corinda	Holland Park West	South Brisbane
Ascot	Dutton Park	Indooroopilly	Spring Hill
Ashgrove	East Brisbane	Kangaroo Point	St Lucia
Balmoral	Enoggera (including Military Camp)	Kedron	Stafford
Bardon	Fairfield	Kelvin Grove	Stafford Heights
Bowen Hills	Fortitude Valley - Inner	Lutwyche	Taringa
Bulimba	Fortitude Valley - Remainder	Milton	Tarragindi
Camp Hill	Graceville	Moorooka	Toowong
Cannon Hill	Grange	Morningside	West End
Carina	Greenslopes	New Farm	Wilston
Carina Heights	Hamilton	Newmarket	Windsor
Carindale	Hawthorne	Newstead	Woolloongabba
Chelmer	Hendra	Norman Park	Woolloowin
City - Inner	Herston	Nundah	Yeerongpilly
City - Remainder		Paddington	Yeronga

EXPLANATORY NOTES

POPULATION SURVEY

1 This survey is based on a multi-stage area sample of private dwellings and non-private dwellings (hotels, motels, etc.) and usually covers approximately three-fifths of 1% of the population of Queensland. The information is obtained from the occupants of selected dwellings by carefully chosen and specially trained interviewers. The interviews are generally conducted during a period of 2 weeks beginning on the Monday between the 6th and 12th of each month. The information obtained relates to the week before the interview (i.e. the reference week).

SCOPE

2 The labour force survey includes all persons aged 15 years and over except:

- members of the permanent defence forces,
- certain diplomatic personnel of overseas governments, customarily excluded from census and estimated populations,
- overseas residents in Australia and
- members of non-Australian defence forces (and their dependants) stationed in Australia.

COVERAGE

3 In the labour force survey, coverage rules are applied which aim to ensure that each person is associated with only one dwelling and hence has only one chance of selection. The coverage rules are, necessarily, a balance between theoretical and operational considerations. Nevertheless, the chance of a person being enumerated at two separate dwellings in the one survey is considered to be negligible.

4 Persons who are away from their usual residence for 6 weeks or less at the time of interview are enumerated at their usual residence when relevant information can be obtained from other usual residents present at the time of the survey.

SUPPLEMENTARY AND SPECIAL SURVEYS

5 Emphasis in the population survey is placed on the regular collection of specific data on demographic and labour force characteristics of the population. However, supplementary and special surveys of particular aspects of the labour force, or of other subjects, are carried out from time to time. Statistics from these surveys are published and are available on request. A list of survey publications on labour force and related topics is shown on page 21.

POPULATION BENCHMARKS

6 Labour force survey estimates of persons employed, unemployed and not in the labour force are calculated in such a way as to add up to the independently estimated distribution of the population aged 15 years and over by age and sex. This procedure compensates for under-enumeration in the survey and leads to more reliable estimates. The independent population statistics (benchmarks) are the latest available estimates at the time the labour force survey is conducted. They usually differ from the official population estimates subsequently published in the quarterly ABS publication *Australian Demographic Statistics* (3101.0) because they are necessarily derived from incomplete information about population changes.

7 Since regular estimates of the population are not available at the regional level, the State benchmarks were used to produce regional estimates. This

EXPLANATORY NOTES *continued*

methodology assumes a common pattern of under-enumeration at the regional level and also ensures that regional estimates add to the State totals.

8 While this procedure can be expected to provide reliable estimates of unemployment and participation rates, it cannot be taken as completely reliable for estimates of numbers involved. For this reason, estimates of numbers in each region have not been added to provide an estimate of the total civilian population aged 15 years and over.

REVISION OF SERIES

9 Survey estimates are not revised for the usually small amendments of population benchmarks arising from new data on deaths and overseas and internal migration. Revisions are made, however, after each census of population and housing and when population estimation bases are reviewed. These revisions affect unadjusted, seasonally adjusted and trend estimates. The last such revision was made in February 1994 to take account of the results of the 1991 Census of Population and Housing. This affected all the monthly estimates from January 1989 to January 1994.

10 The estimates shown in this publication are based entirely on place of usual residence. Prior to October 1982, the estimates were based on a combination of place of enumeration and place of usual residence.

11 Until February 1978, surveys were conducted in February, May, August and November each year from 1964. From February 1978 the survey has been conducted on a monthly basis.

12 The questionnaire used in the survey for the collection of labour force data has been revised a number of times. Details of these changes have been published in *Information Paper: Questionnaires Used in the Labour Force Survey* (6232.0) in March 1978, December 1981, August 1984, June 1986, June 1991 and March 1993.

COMPARABILITY OF SERIES

13 As noted in paragraph 9, estimates from January 1989 have been revised to conform to revised population estimates following the 1991 Census of Population and Housing and are thus not strictly comparable with estimates for periods prior to January 1989, which have not been revised.

14 From August 1996, occupation data are classified according to the new edition of the Australian Standard Classification of Occupations (ASCO) and are not comparable with previous information. For more detailed information see *ASCO — Australian Standard Classification of Occupations, Information Paper* (1221.0). A concordance between these versions of ASCO is not yet available.

15 Regional estimates are based on statistical regions from September 1987. They are not comparable with estimates prior to that date which were based on differently composed dissemination regions.

16 Comparability with estimates produced from the quarterly survey of employment and earnings is affected by the use of a different survey methodology and definitions. The labour force survey provides estimates of people in jobs whereas the survey of employment and earnings provides an estimate of the number of jobs held by employees. A more detailed description of the differences between these two series is provided in *Information Paper: Comparison of Employment Estimates from the Labour Force Survey and the Survey of Employment and Earnings* (6263.0).

RELIABILITY OF ESTIMATES

- 17** Estimates in this publication are subject to two sources of error.
- *Sampling error.* Since the estimates are based on information obtained from occupants of a sample of dwellings, they and the movements derived from them, may differ from the figures that would have been produced if all dwellings had been included in the survey. More information on this topic is given in the Technical Notes.
 - *Non-sampling error.* Inaccuracies may occur because of imperfections in reporting by respondents and interviewers and errors made in coding and processing data. These inaccuracies may occur in any enumeration, whether it be a full count or a sample. Every effort is made to reduce the non-sampling error to a minimum by careful design of questionnaires, intensive training and supervision of interviewers and efficient operating procedures.

RELIABILITY OF REGIONAL LABOUR FORCE ESTIMATES

- 18** While the Labour Force Survey is designed primarily to produce reliable estimates at the national and State or Territory level, it also delivers estimates for a number of regions within States.
- 19** As with the national and State estimates, regional labour force estimates are subject to sampling error. Since estimates for regions are components of the corresponding State level and thus are based on a considerably smaller sample size, they are subject to higher relative standard errors. Care should therefore be taken in the interpretation of regional estimates, particularly when comparing month-to-month movements. Tables of standard errors for each region are available later in this publication.

SURVEY SAMPLE REDESIGN

- 20** The ABS has reselected the Labour Force Survey sample to incorporate information obtained from the 1996 Census of Population and Housing. The new sample was introduced over an 8 month period, from September 1997 until April 1998, in order to minimise possible effects on the continuity of key labour force statistics. Details of the new sample, and the sample design and methodology of the survey, are given in *Information Paper: Labour Force Survey Sample Design* (6269.0).
- 21** Regional labour force statistics are subject to significant volatility and are especially vulnerable at the time of reselection of the Labour Force survey sample, as the new sample selected to represent each region may have characteristics different from the old sample. Consequently, it can be expected that some regional series may suffer quite noticeable disturbances during the period September 1997 to April 1998. Thus, regional estimates from September 1997 onwards may not be comparable with those before September 1997.

STATISTICAL REGIONS

- 22** From September 1997, Labour Force dissemination regions are classified according to *Australian Standard Geographical Classification, 1996 Edition* (1216.0).
- 23** A review of dissemination regions for labour force data was conducted during 1996. As a result, the boundaries for some regions have been changed to maintain consistency with the ASGC. Details of the new labour force regions are given in *Information Paper: Regional Labour Force Statistics* (6262.0).

EXPLANATORY NOTES *continued*

24 An additional dissemination region has become available for the Gold Coast — Gold Coast City (Parts A and B) Statistical Region Sectors. This new region is formed from parts of the South and East BSD Balance and South and East Moreton Statistical Regions. The latter regions have not changed and data will continue to be available for them.

25 The Brisbane City Outer Ring Statistical Region has been enlarged to include part of Carole Park, formerly of North and West BSD Balance Statistical Region. Consequently, estimates of the labour force in these regions are expected to change by 1,000 persons.

SEASONAL ADJUSTMENT

26 Seasonal adjustment is a means of removing the estimated effects of normal seasonal variation from the series so that the effect of other influences on the series can be more clearly recognised. Seasonal adjustment does not remove the irregular or non-seasonal influences which may be present in any particular month. Influences that are volatile can still make it difficult to interpret the movement of the series even after adjustment for seasonal variation. Seasonal factors are reviewed annually to take account of each additional year of original data.

TREND ESTIMATION

27 Smoothed seasonally adjusted series produce a measure of trend by reducing the impact of the irregular component of the series. The trend estimates are derived by applying a 13-term Henderson-weighted moving average to the respective seasonally adjusted series. These trend series are used to analyse the underlying behaviour of the series over time.

28 While this smoothing technique enables estimates to be produced which include the latest month, it does result in revisions to the most recent months as additional observations become available. Generally, subsequent revisions become smaller and after 3 months have a negligible impact on the series. There will also be revisions as a result of the annual review of seasonal factors.

MONTH-TO-MONTH MOVEMENTS

29 Care should be taken in the interpretation of month-to-month movements in labour force survey estimates as they are subject to sampling and non-sampling variability as explained in paragraph 17.

RELATED PUBLICATIONS

30 Other ABS publications which may be of interest include:

A Guide to Interpreting Time Series — Monitoring 'Trends' (1349.0)

Information Paper: A Guide to Interpreting Time Series — Monitoring 'Trends' — An Overview (1348.0)

Information Paper: Comparison of Employment Estimates from the Labour Force Survey and the Survey of Employment and Earnings (6263.0)

Information Paper: Labour Force Survey — Measuring Teenage Unemployment (6270.0)

Information Paper: Labour Force Survey — Sample Design (6269.0)

Information Paper: Measuring Employment and Unemployment (6279.0)

Information Paper: Regional Labour Force Statistics (6262.0)

Labour Force, Australia (6203.0)

EXPLANATORY NOTES *continued*

Labour Force, Australia, Preliminary (6202.0)

Monthly Summary of Statistics, Queensland (1304.3)

31 Current publications produced by the ABS are listed in the *Catalogue of Publications and Products* (1101.0). The ABS also issues the *Release Advice* (1105.0) on Tuesdays and Fridays which lists publications to be released in the next few days. Both the Catalogue and the *Release Advice* are available from any ABS office.

UNPUBLISHED STATISTICS

32 As well as the statistics included in this and related publications, the ABS may have other relevant unpublished data available. Inquiries should be made to the contact phone number shown at the front of this publication.

ROUNDING

33 Where figures have been rounded, discrepancies may occur between totals and the sums of the component items.

SYMBOLS AND OTHER USAGES

- .. not applicable
- * subject to sampling variability too high for most practical purposes (see paragraphs 8 and 9 of the Technical Notes)

TECHNICAL NOTES

ESTIMATION PROCEDURE

1 The labour force estimates are derived from the monthly population survey by use of a complex ratio estimation procedure, which ensures that the survey estimates conform to an independently estimated distribution of the population by age and sex, rather than to the age and sex distribution within the sample itself. This procedure compensates for under-enumeration in the survey and leads to more reliable estimates.

2 Since regular estimates of the population are not available at the regional level, the State benchmarks were used to produce regional estimates. This methodology assumes a common pattern of under-enumeration at the regional level and also ensures that regional estimates add to the State totals.

DATA QUALITY

3 Two types of error are possible in an estimate based on a sample survey: sampling error and non-sampling error. Non-sampling error is explained in the Explanatory Notes, paragraph 17. The sampling error is a measure of the variability that occurs by chance because a sample, rather than the entire population, is surveyed.

Standard error of estimates

4 One measure of the variability of estimates which occurs as a result of surveying only a sample of the population is the standard error (SE).

5 There are about two chances in three that a sample estimate will differ by less than one standard error from the figure that would have been obtained if all dwellings had been included and about 19 chances in 20 that the difference will be less than two standard errors.

6 The standard error of an estimate can be obtained from table A. Linear interpolation should be used to calculate the standard error of estimates falling between the sizes of estimates listed in the table (see example in paragraphs 12 and 13 following).

7 Standard errors for some estimates, e.g. unemployment, can vary from those shown in the tables. Methods for calculating the standard errors of these estimates are shown in paragraph 14.

Relative standard error

8 Another measure of sampling variability is the relative standard error (RSE). This is obtained by expressing the standard error as a percentage of the estimate to which it refers. The RSE is a useful measure in that it provides an immediate indication of the percentage errors likely to have occurred due to sampling and thus avoids the need to refer also to the size of the estimate.

9 In the tables in this publication, only estimates with RSEs of 25% or less, and percentages based on such estimates, are considered sufficiently reliable for most purposes. However, estimates and percentages with larger RSEs have been included and are preceded by an asterisk (e.g. * 3.0) to indicate they are subject to high standard errors and should be used with caution. Small estimates are subject to such high standard errors (relative to the size of the estimate) as to detract seriously from their value for most reasonable use.

Standard error of movement

10 The movement in the level of an estimate is also subject to sampling variability. The standard error of the movement depends on the levels of the estimates from which the movement is obtained rather than the size of the movement. Standard errors of monthly movements are given in table B. These estimates apply only to estimates of movements between two consecutive months.

11 Movements between corresponding months of consecutive quarters, i.e. quarterly movements, can be obtained by multiplying the figures in table B by 1.21. Standard errors of movements between corresponding months of consecutive years, i.e. annual movements, can be obtained by multiplying the figures in table A by 1.3. When using tables A or B to calculate standard errors of movements, refer to the larger of the two estimates from which the movement is derived.

LINEAR INTERPOLATION

12 Linear interpolation is used to determine the standard error of an estimate which falls between two values listed in the size of estimate column in tables A or B. Linear interpolation is best described using an example. In May 1998 there were 706,200 (X_e) employed females in Queensland. This estimate falls between 500,000 (X_l) and 1,000,000 (X_u) in table A.

13 The standard error of the estimate is determined as follows:

Firstly calculate

$$\begin{aligned}
 F &= \frac{X_e - X_l}{X_u - X_l} \\
 &= \frac{706,200 - 500,000}{1,000,000 - 500,000} \\
 &= 0.412
 \end{aligned}$$

Secondly, calculate the standard error of the estimate, $SE(X_e)$ thus,

$$\begin{aligned}
 SE(X_e) &= SE(X_l) + F[SE(X_u) - SE(X_l)] \\
 &= 7,000 + 0.412[8,900 - 7,000] \\
 &= 7,783 \\
 &= 7,800 \text{ rounding to the nearest 100}
 \end{aligned}$$

Therefore the standard error of the number of employed females in Queensland in May 1998 (706,200) is 7,800.

14 Standard errors for selected estimates may be calculated as follows.

<i>Measure of reliability to be determined</i>	<i>Method</i>
Standard errors of estimates of employed persons.	Determine the SE from Table A directly.
Standard errors of estimates of unemployed persons.	Multiply the SE from Table A by 0.97.
Standard errors of estimates of persons not in the labour force.	Multiply the SE from Table A by 1.06.
Standard errors of rates (e.g. the unemployment rate which is based on the number of unemployed persons expressed as a percentage of the number of persons in the labour force).	Determine the RSE of the numerator (x) and the denominator (y) then apply the following formula. $RSE(x/y) = \sqrt{[RSE(x)]^2 - [RSE(y)]^2}$
Standard error of average hours worked.	Determine the RSE for the number of persons on which the average is based, multiply this by 0.7.
Standard error of median duration of unemployment.	Determine the RSE for the number of persons on which the median is based, multiply this by 2.0.
Standard error of monthly movements.	Using Table B, look up the SE of the larger estimate.
Standard error of quarterly movements.	Determine the standard error of the larger estimate (using Table A), multiply this by 1.21.
Standard error of annual movements.	Determine the standard error of the larger estimate (using Table A) and multiply this by 1.3.

B

STANDARD ERRORS OF MONTHLY MOVEMENTS FOR STATISTICAL REGIONS AND QUEENSLAND

Size of estimate	Brisbane (MSR) Statistical Regions						Balance of Queensland Statistical Regions						
	Queensland; Brisbane (MSR); Balance of Queensland		Brisbane City Inner Ring	Brisbane City Outer Ring	South and East Brisbane Statistical Division Balance	North and West Brisbane Statistical Division Balance	South and East Moreton	North and West Moreton	Wide Bay-Burnett	Darling Downs and South-West	Mackay, Fitzroy and Central-West	Northern and North-West	Far North
	No.	%	No.	No.	No.	No.	No.	No.	No.	No.	No.	No.	No.
1 000	580	58.0	330	310	250	320	290	300	340	320	340	320	290
1 500	660	44.0	400	370	300	380	340	350	400	390	410	390	340
2 000	730	36.5	450	420	340	440	390	400	460	440	460	440	390
2 500	790	31.6	500	470	370	480	430	440	500	480	510	480	430
3 000	840	28.0	540	510	400	520	460	480	550	520	550	520	460
4 000	930	23.3	610	570	460	590	530	540	620	590	620	590	530
5 000	1 000	20.0	670	630	500	650	580	600	680	650	680	650	580
7 000	1 150	16.4	770	730	580	750	670	690	790	760	790	750	670
10 000	1 250	12.5	900	850	680	880	780	810	920	880	920	880	780
15 000	1 450	9.7	1 100	1 000	810	1 050	930	960	1 100	1 050	1 100	1 050	930
20 000	1 600	8.0	1 200	1 150	920	1 200	1 050	1 100	1 250	1 200	1 250	1 200	1 050
30 000	1 850	6.2	1 450	1 350	1 100	1 400	1 250	1 300	1 500	1 400	1 500	1 400	1 250
50 000	2 200	4.4	1 800	1 700	1 350	1 750	1 550	1 600	1 850	1 750	1 850	1 750	1 550
100 000	2 800	2.8	2 450	2 300	1 850	2 400	2 100	2 200	2 500	2 400	2 500	2 400	2 150
200 000	3 550	1.8	3 300	3 150	2 500	3 200	2 850	2 950	3 350	3 250	3 400	3 200	2 850
300 000	4 100	1.4	3 950	3 750	2 950	3 850	3 400	3 550	4 000	3 850	4 050	3 850	3 450

GLOSSARY

Attending school	Persons aged 15 to 19 years who, during the reference week, were enrolled full-time at secondary or high schools.
Attending tertiary educational institution full-time	Persons aged 15 to 24 years who, during the reference week, were enrolled full-time at a TAFE college, university or other educational institution.
Average hours worked	Aggregate hours worked by a group divided by the number of persons in that group.
Average duration of unemployment	For a group of unemployed persons, the aggregate duration of unemployment divided by the number of persons in the group.
Duration of unemployment	The period from the time a person began looking for work or was stood down, to the end of the reference week. Thus the survey measures current (and continuing) periods of unemployment rather than completed spells. For persons who may have begun looking for work while still employed, the duration of unemployment is defined as the period from the time the person last worked full-time for 2 weeks or more to the end of the reference week.
Employed	Persons aged 15 years and over who, during the reference week: <ul style="list-style-type: none">■ worked for 1 hour or more for pay, profit, commission or payment in kind in a job or business or on a farm (comprising employees, employers and own account workers);■ worked for 1 hour or more without pay in a family business or on a farm (i.e. contributing family workers);■ were employees who had a job but were not at work and were: on paid leave; on leave without pay for less than 4 weeks up to the end of the reference week; stood down without pay because of bad weather or plant breakdown at their place of employment for less than 4 weeks up to the end of the reference week; on strike or locked out; on workers' compensation and expected to be returning to their job; receiving wages or salary while undertaking full-time study or■ were employers, own account workers or contributing family workers who had a job, business or farm, but were not at work.
Former workers	Unemployed persons who have previously worked full-time for 2 weeks or more but not in the past 2 years.
Full-time workers	Employed persons who usually worked 35 hours or more a week (in all jobs) and others who, although usually working less than 35 hours a week, worked 35 hours or more during the reference week.
Hours worked	The total number of hours a group of employed persons has actually worked during the reference week, not necessarily hours paid.
Job leavers	Unemployed persons who have worked full-time for 2 weeks or more in the past 2 years and <i>left that job voluntarily</i> , that is, because of unsatisfactory work arrangements, pay or hours; the job was seasonal, temporary or a holiday job and they left that job to return to studies; their last job was running their own business and they closed down or sold that business for reasons other than financial difficulties, or any other reasons.

Job losers Unemployed persons who have worked full-time for 2 weeks or more in the past 2 years and *left that job involuntarily*, that is, were laid off or retrenched from that job; left that job because of their own ill-health or injury; the job was seasonal or temporary and they did not leave that job to return to studies, or their last job was running their own business and the business closed down from financial difficulties.

Industry From August 1994, Labour Force Survey industry data are classified according to the Australian and New Zealand Standard Industrial Classification (ANZSIC). Like the previous Australian Standard Industrial Classification (ASIC), ANZSIC classifies businesses according to their economic activities, in a structure consisting of four levels (Division, Sub-division, Group and Class). Labour Force Survey data are coded at the group level, as was the practice under ASIC. To assist users in making comparisons with previously published data, a concordance was developed which shows for each ASIC Group, the corresponding ANZSIC Group or Groups. The concordance also shows the estimated employment attributable to each ANZSIC Group, compared with ASIC Group data, according to establishment unit employment data on the ABS Business Register at May 1994. Historical estimates of employment by ANZSIC Group have been compiled on the basis of the concordance, and are available on request. For further information about the application of ANZSIC, see *Information Paper: Labour Force Survey: Introduction of ANZSIC for Industry Data* (6259.0) and *Australian and New Zealand Standard Industry Classification, 1993* (1292.0).

It has since been found that the concordance, which was based on preliminary investigations, did not provide the most appropriate conversion for certain Group level industries. An improved concordance has now been applied to historical Labour Force Survey estimates.

This concordance is published in the *Information Paper: Labour Force Survey: Revisions to Historical ANZSIC Industry Data* (6259.0).

Labour force For any group, persons who were employed or unemployed, as defined.

Labour force status A classification of the civilian population aged 15 years and over into employed, unemployed or not in the labour force, as defined. The definitions conform closely to the international standard definitions adopted by the International Conferences of Labour Statisticians.

Marital status Persons are classified as married (husband and wife) if they are reported as being married (including de facto) and their spouse was a usual resident of the household at the time of the survey. The not married category comprises persons who have never married, or are separated, widowed or divorced, as well as those who, although reported as being married, did not have a spouse who usually lived in the household.

Median duration of unemployment The duration which divides unemployed persons into two equal groups, one comprising persons whose duration of unemployment is above the median and the other, persons whose duration is below it.

Not in the labour force Persons who were not in the categories employed or unemployed, as defined. They include persons who were keeping house (unpaid), retired, voluntarily inactive, permanently unable to work, persons in institutions (hospitals, jails, sanatoriums, etc.), trainee teachers, members of contemplative religious orders

and persons whose only activity during the reference week was jury service or unpaid voluntary work for a charitable organisation.

Occupation From August 1996, Labour Force Survey occupation data are classified according to the Australian Standard Classification of Occupations (ASCO) Second Edition, a detailed description of which appears in *ASCO — Australian Standard Classification of Occupations, Information Paper* (1221.0). The new version of the classification replaces ASCO First Edition, which was adopted in the survey in August 1986.

Participation rate For any group, the labour force expressed as a percentage of the civilian population aged 15 years and over in the same group. Participation rates for persons classified by birthplace are calculated using population estimates which exclude those in institutions. Participation rates for persons classified by school or tertiary educational institution attendance are calculated using population estimates which include those in institutions.

Part-time workers Employed persons who usually worked less than 35 hours a week and who did so during the reference week.

Seasonally adjusted series A time series of estimates with the estimated effects of normal seasonal variation removed. See paragraph 26 of the Explanatory Notes for more detail.

Statistical regions Classified according to the *Australian Standard Geographical Classification, Edition 2.5* (1216.0).

Status in employment From August 1994, the Labour Force Survey has adopted the international classification of Status in Employment, previously referred to as Status of Worker in the survey. This change follows recommendations of the 15th International Conference of Labour Statisticians and ABS standards. For the Labour Force Survey, the change involves no changes in definitions. The only changes are to the classification titles, as follows:

<i>Status of worker</i>	<i>Status in employment</i>
Wage and salary earner	Employee
Employer	Employer
Self-employed	Own account worker
Unpaid family helper	Contributing family worker

Trend series A smoothed seasonally adjusted series of estimates. See paragraphs 27 and 28 of the Explanatory Notes for more detail.

Unemployed Persons aged 15 years and over who were not employed during the reference week and:

- had actively looked for full-time or part-time work at any time in the 4 weeks up to the end of the reference week and:
 - ◆ were available for work in the reference week or would have been available except for temporary illness (i.e. lasting for less than 4 weeks to the end of the reference week);
 - ◆ were waiting to start a new job within 4 weeks from the end of the reference week and would have started in the reference week if the job had been available then or

- were waiting to be called back to a full-time or part-time job from which they had been stood down without pay for less than 4 weeks up to the end of the reference week (including the whole of the reference week) for reasons other than bad weather or plant breakdown.

Unemployed persons classified by industry and occupation Unemployed persons who had worked full-time for 2 weeks or more in the last 2 years are classified according to the industry and occupation of their most recent full-time job.

Unemployed looking for full-time work Unemployed persons who actively looked for full-time work or were to resume a full-time job, from which they had been stood down.

Unemployed looking for part-time work Unemployed persons who had actively looked for part-time work only or were to resume a part-time job, from which they had been stood down.

Unemployment rate For any group, the number of unemployed persons expressed as a percentage of the labour force in the same group.

SELF-HELP ACCESS TO STATISTICS

PHONE Call 1900 986 400 for the latest statistics on CPI, Labour Force, Earnings, National Accounts, Balance of Payments and other topics. (Call cost is 75c per minute)

INTERNET <http://www.abs.gov.au>

LIBRARY A range of ABS publications is available from public and tertiary libraries Australia wide. Contact your nearest library to determine whether it has the ABS statistics you require.

WHY NOT SUBSCRIBE?

PHONE +61 1300 366 323

FAX +61 3 9615 7848

CONTACTING THE ABS

ABS provides a range of services, including: a telephone inquiry service; information consultancy tailored to your needs; survey, sample and questionnaire design; survey evaluation and methodological reviews; and statistical training.

<i>INQUIRIES</i>	<i>By phone</i>	<i>By fax</i>
Canberra	02 6252 6627	02 6253 1404
Sydney	02 9268 4611	02 9268 4668
Melbourne	03 9615 7755	03 9615 7798
Brisbane	07 3222 6351	07 3222 6283
Perth	08 9360 5140	08 9360 5955
Adelaide	08 8237 7400	08 8237 7566
Hobart	03 6222 5800	03 6222 5995
Darwin	08 8943 2111	08 8981 1218

POST Client Services, ABS, PO Box 10, Belconnen, ACT 2616

EMAIL client.services@abs.gov.au



2620130005980
ISSN 0313-1912

RRP \$18.00